

---

# CLUTCH

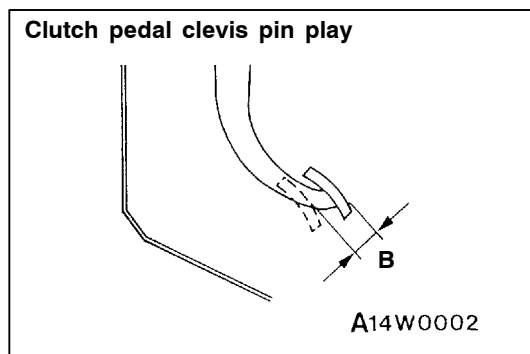
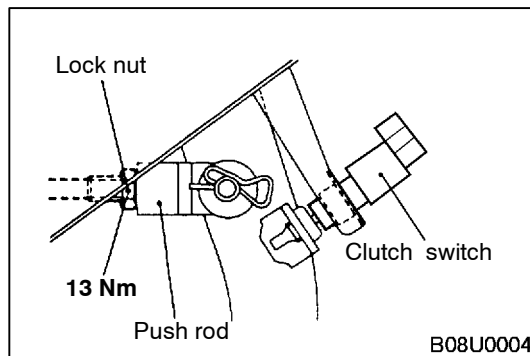
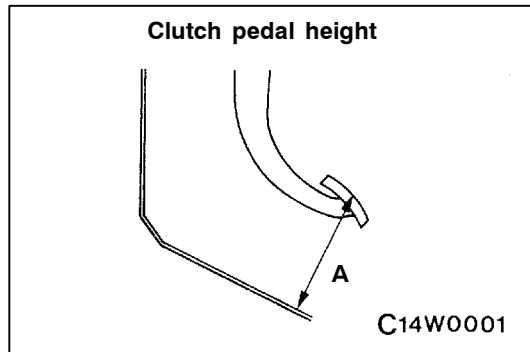
CONTENTS

<b>GENERAL</b> .....	<b>2</b>	<b>CLUTCH CONTROL &lt;4G64 L.H. DRIVE VEHICLES&gt;</b> .....	<b>5</b>
Outline of Change .....	2		
<b>ON-VEHICLE SERVICE</b> .....	<b>2</b>	<b>CLUTCH CONTROL &lt;4G64 R.H. DRIVE VEHICLES&gt;</b> .....	<b>6</b>
Clutch Pedal Inspection and Adjustment		Clutch Master Cylinder .....	6
<4G64> .....	2		
<b>CLUTCH PEDAL</b> .....	<b>4</b>		

## GENERAL

### OUTLINE OF CHANGE

- A clutch switch has been newly used. Accordingly, service procedures of the clutch pedal have been added. <4G64>
- Service procedures for the clutch control has been established due to the addition of the clutch fluid line damper. <4G64 L.H. drive vehicles>
- Service procedures for the clutch master cylinder has been established as a damper has been added to the clutch master cylinder. <4G64 R.H. drive vehicles>



## ON-VEHICLE SERVICE

### CLUTCH PEDAL INSPECTION AND ADJUSTMENT<4G64>

1. Turn up the carpet, etc. under the clutch pedal.
2. Measure the clutch pedal height.

#### Standard value (A):

<L.H. drive vehicles> 176 – 179 mm

<R.H. drive vehicles> 163 – 166 mm

3. When the clutch pedal height does not meet the standard value, adjust as follows:
  - (1) Disconnect the clutch switch connector.
  - (2) Turn the clutch switch counter-clockwise about 1/4 time to loosen.
  - (3) Adjust the clutch switch so that the clutch pedal height meets the standard value. Then, turn the clutch switch clockwise about 1/4 time to secure.
  - (4) Connect the clutch switch connector.

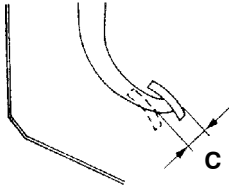
4. Measure the clutch pedal play.

#### Standard value (B): 1 – 3 mm

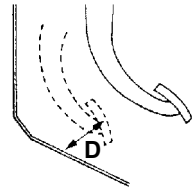
5. When the clutch pedal play does not meet the standard value, loosen the lock nut and move the push rod to adjust.

#### Caution

**Do not push in the master cylinder push rod at this time.**

**Clutch pedal free play**

14W0002

**Distance between the clutch pedal and the toeboard when the clutch is disengaged**14W0003  
00003373

6. After completing the adjustments, confirm that the clutch pedal free play (measured at the face of the pedal pad) and the distance between the clutch pedal (the face of the pedal pad) and the toeboard when the clutch is disengaged are within the standard value ranges.

**Standard value (C): 6 – 13 mm****Standard value (D): 125 mm or more**

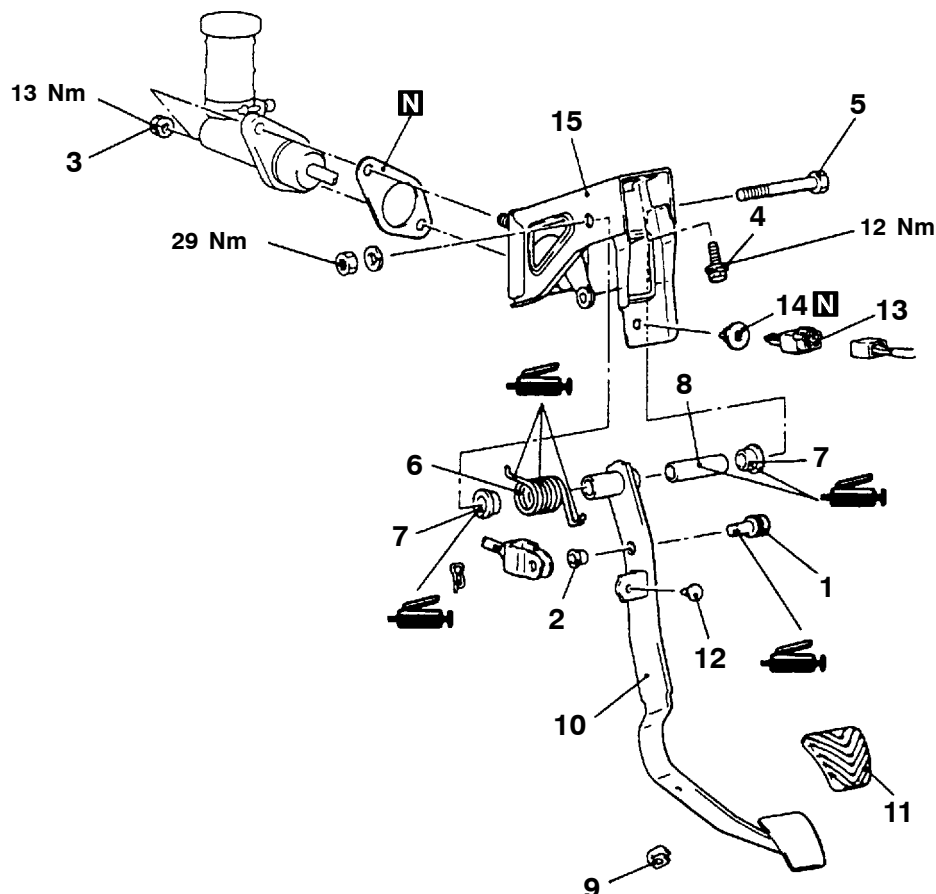
7. If the clutch pedal free play and the distance between the clutch pedal and the toeboard when the clutch is disengaged do not agree with the standard values, it is probably the result of either air in the hydraulic system or a faulty master cylinder or clutch. Bleed the air, or disassemble and inspect the master cylinder or clutch.
8. Turn back the carpet, etc.

# CLUTCH PEDAL

## REMOVAL AND INSTALLATION

### Post-installation Operation

Clutch Pedal Adjustment (Refer to P.21-2)



A08I0010

### Removal steps

- |                                  |                                     |
|----------------------------------|-------------------------------------|
| 1. Clevis pin assembly           | 10. Clutch pedal                    |
| 2. Bushing                       | 11. Pedal pad                       |
| 3. Nut                           | 12. Stopper                         |
| 4. Bolt                          | 13. Clutch switch                   |
| 5. Bolt                          | 14. Clip                            |
| 6. Clutch return spring          | 15. Master cylinder member assembly |
| 7. Clutch pedal bushing          |                                     |
| 8. Pipe                          |                                     |
| 9. Stopper <R.H. drive vehicles> |                                     |

## INSPECTION

### CLUTCH SWITCH CHECK

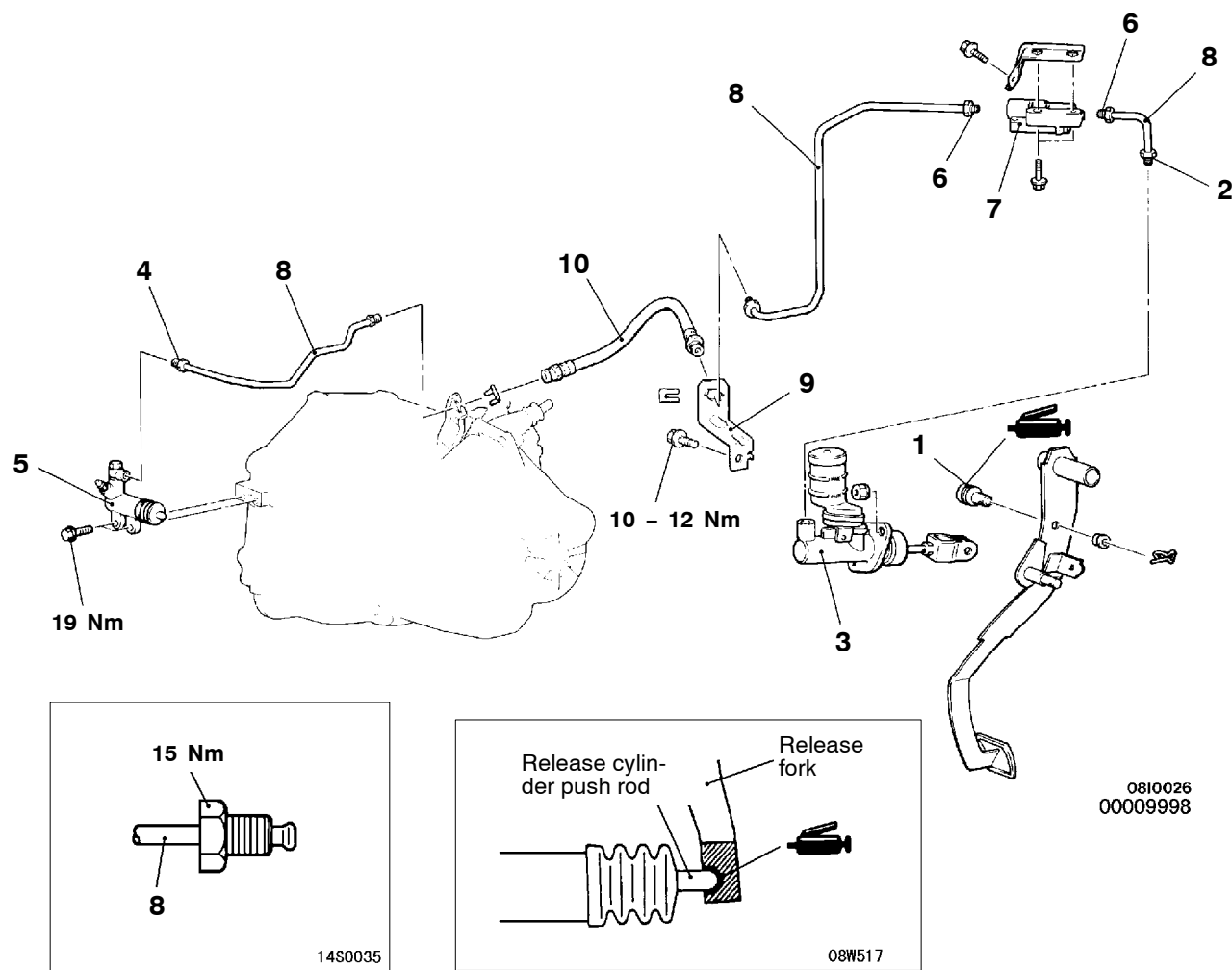
Refer to GROUP 13I – On-vehicle Service.

**CLUTCH CONTROL <4G64 L.H. drive vehicles>****REMOVAL AND INSTALLATION****Pre-removal Operation**

Clutch Fluid Draining

**Post-installation Operation**

- Clutch Fluid Supplying
- Clutch Line Bleeding
- Clutch Pedal Adjustment (Refer to P.21-2.)

**Clutch master cylinder removal steps**

1. Clevis pin assembly
2. Clutch pipe connection
3. Clutch master cylinder

**Clutch release cylinder removal steps**

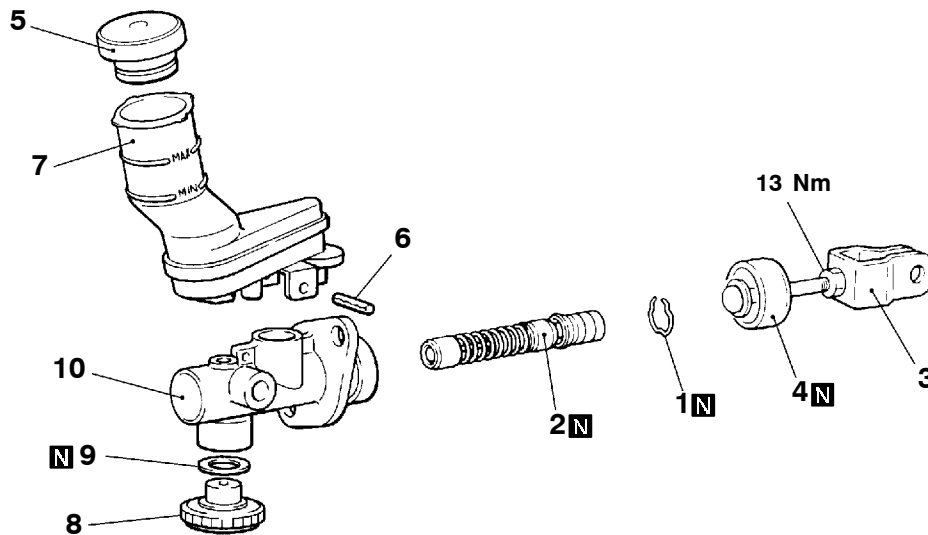
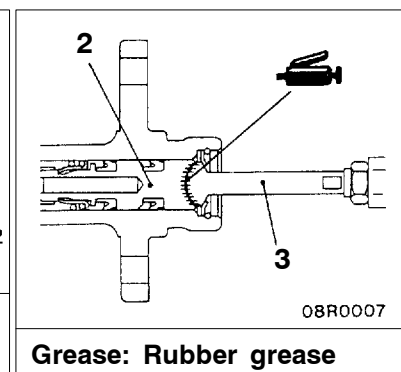
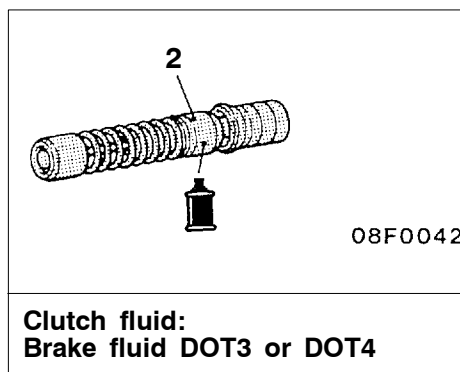
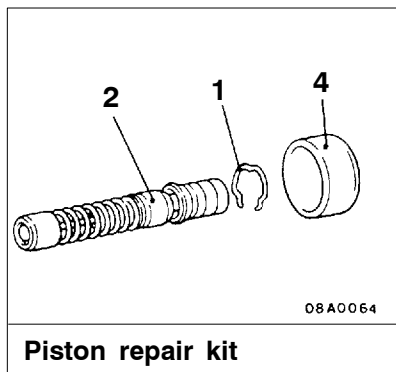
4. Clutch pipe connection
5. Clutch release cylinder

**Clutch fluid line damper removal steps**

6. Clutch pipe connection
7. Clutch fluid line damper

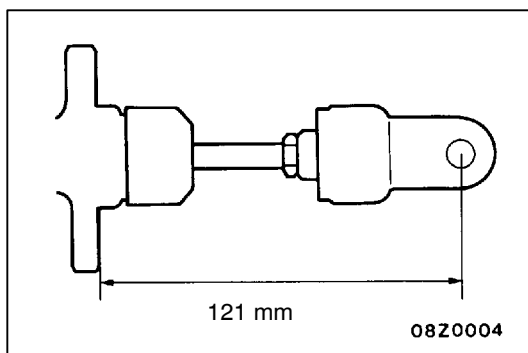
**Clutch line removal steps**

8. Clutch pipe
9. Bracket
10. Clutch hose

**CLUTCH CONTROL <4G64 R.H. drive vehicles>****CLUTCH MASTER CYLINDER  
DISASSEMBLY AND REASSEMBLY**0810027  
00009999**Disassembly steps**

- A◄
1. Piston stopper ring
  2. Piston assembly
  3. Push rod assembly
  4. Boot
  5. Reservoir cap
  6. Spring pin
  7. Reservoir tank

8. Damper assembly
9. Gasket
10. Clutch master cylinder assembly

**Caution****Do not disassemble piston assembly.****INSTALLATION SERVICE POINT****►A◄ PUSH ROD ASSEMBLY INSTALLATION**

Set the length of the push rod assembly to the shown dimension to make the adjustment of clutch pedal easier.